

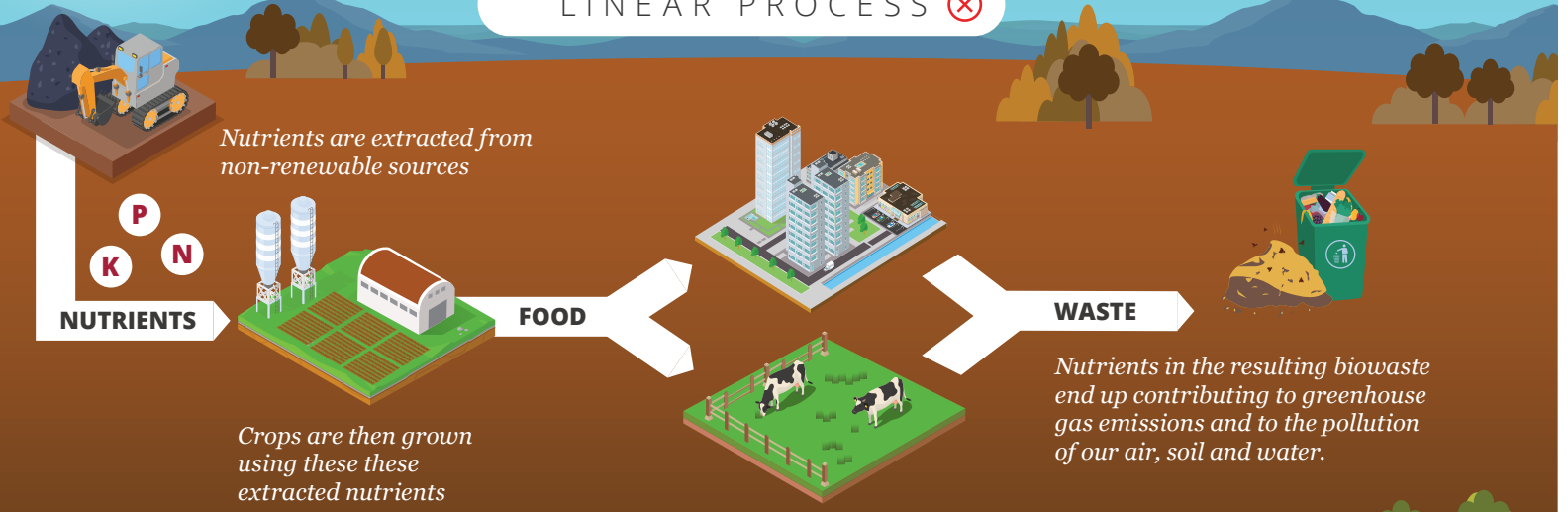


SYSTEMIC

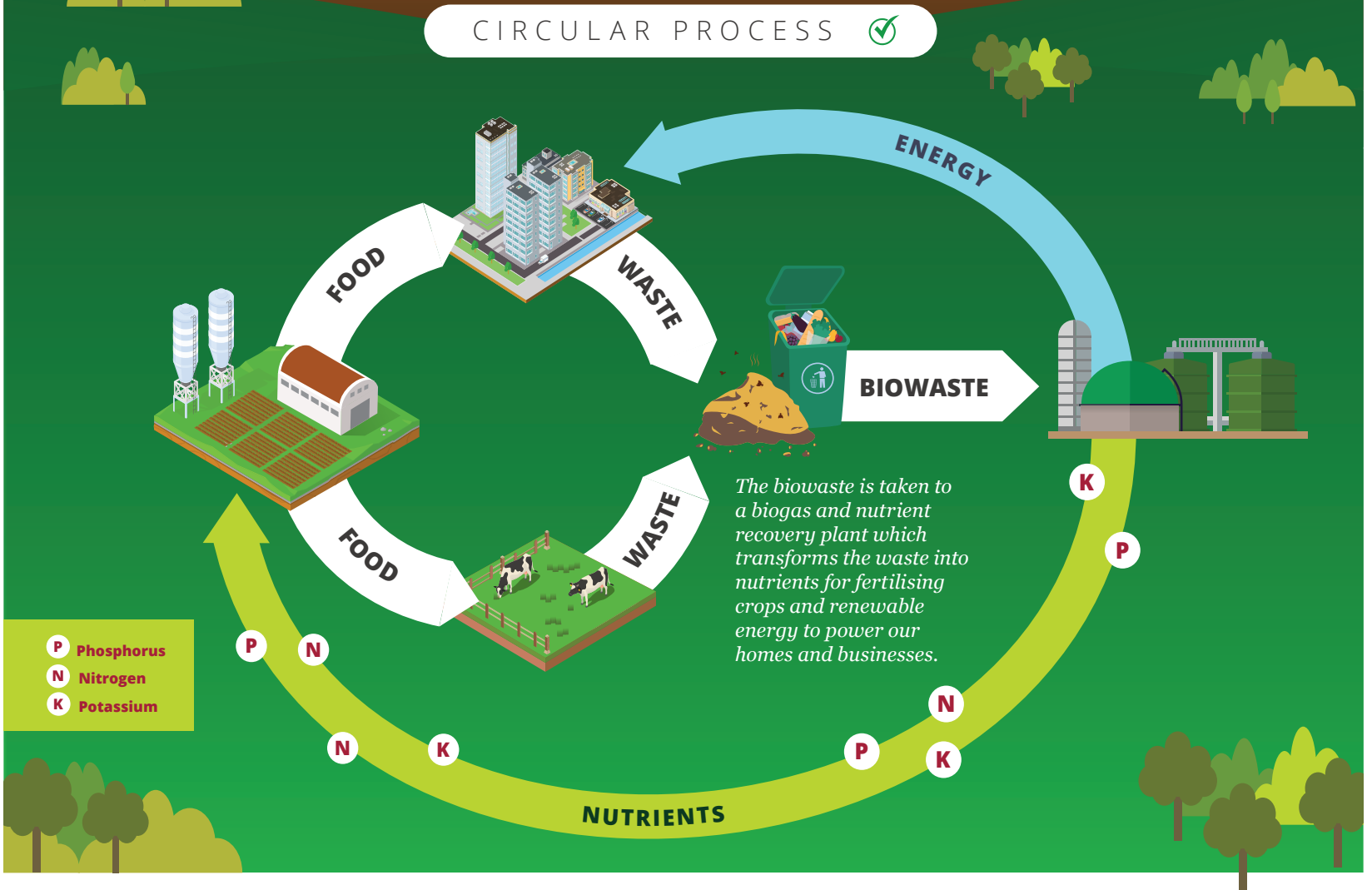
Circular solutions for biowaste

Half of the phosphorus and nitrogen applied every year to croplands in the EU comes from non-renewable sources. In this linear process, a high percentage of valuable nutrients are left unused, leading to pollution and contributing to greenhouse gas emissions. If we can recover nutrients from biowaste (such as animal manure, sewage sludge, food and feed waste) and reuse them on croplands we can reduce pollution and greenhouse gas emissions at the same time as contributing to agriculture's transition to a circular economy.

LINEAR PROCESS ❌



CIRCULAR PROCESS ✅



Find out more at
systemicproject.eu



@systemic_eu



SYSTEMIC receives funding from the European Union's Horizon 2020 Framework Programme for Research and Innovation under Grant Agreement no. 730400